

Description

The SENKO-15A and SENKO-20A models represent the streamlined version of the [SENKO auto open heat press series](#). These simple yet efficient machines are perfectly tailored for T-shirt sublimation businesses, as well as for transferring designs onto jackets, mouse pads, tiles, and other items. These models are characterized by their straightforward design, focusing on ease of use and efficient functionality, making them ideal for businesses looking for a reliable, no-fuss solution. Both the SENKO-15A and SENKO-20A are constructed with the highest grade components, ensuring professional-level performance and durability. And the auto-open feature frees up your hands during the pressing process, allowing for multitasking and improving workflow efficiency. In summary, the SENKO-15A and SENKO-20A [auto open heat presses](#) are ideal for those in the sublimation printing business seeking a straightforward, efficient, and reliable machine. Their ease of use, coupled with the capability to produce high-quality transfers, makes them a valuable asset for any print shop focusing on varied sublimation projects.

Feature



Easy Pressure Adjustment: A rotating knob enables simple pressure setting adjustments before, during, or after the heat press procedure, offering flexibility and control.



GY-04 Digital Controller: Fully digital controls and display allow simple operation and setup for the simple senko auto open heat press.



Slide-out Press Bed: You can easily slide out the press bed with the handle, which makes it easier and more convenient for operation.



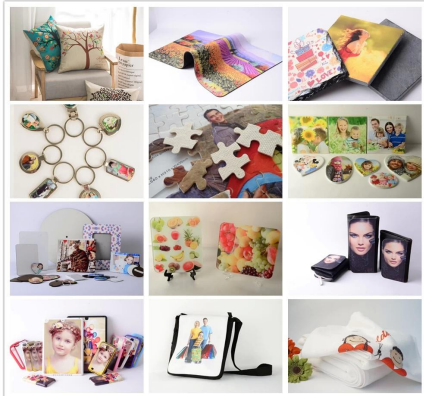
Ergonomic Handle: The ergonomic handle makes the T-shirt sublimation printing machine easy for anyone to make the operation.

Specification

Model No.	SENKO-15A	SENKO-20A
Machine Type	Auto Release, Clamshell	
Platen Size	15"x15" (38x38cm)	16"x20" (40x50cm)
Under Plate	Draw-out & Exchangeable	
Controller	GY-04 Digital Time & Temp. Control	
Printable Articles	Up to 8mm Thickness	
Opening Angle	25 degrees	
Gas Spring Control	Yes	
Voltage	120V/ 220V	
Power	1800W	
Time Range	0-999 sec.	
Maximum Temp.	225 C	
Packing Size	89x54x75cm	90x55x76cm
Gross Weight	57kg	65kg

Application

The SENKO series sublimation heat press is capable of handling a wide range of items beyond T-shirts, the SENKO is a versatile tool for various heat transfer needs, making it a popular choice globally. For example: T-shirts, MDF board, metallic sheet, slippers and other flat products.



SENKO-20A

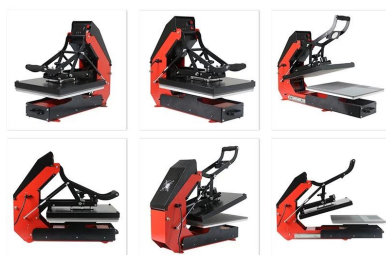


Auto Open T-shirt Heat Press
with Slide-out Press Bed
Model No.: SENKO-15A/ SENKO-20A

- Machine Type: Auto Release, Clamshell
- Platen Size: 15"x15"(38"x38cm)/ 16"x20"(40"x50cm)

Gallery

GALLERY



APPLICATION



DESCRIPTION

The SENKO-15A/20A is the simple design of SENKO auto open heat press. This Simple SENKO Heat Press is also perfect for T-shirt sublimation business.

This sublimation printing machine has been crafted with the highest grade components professionally. The automatic function allows your hands free during the whole press working. With the rotating knob, it is easy for you to make the pressure setting before, during or after your heat press procedure. As soon as the pressure has been adjusted, the balance springs on the top platen provides even pressure throughout – which ensure good transfer quality (always come out even, and without any pressure spots). Once the timer expires, the auto-opening simple senko heat press will open itself automatically, that means you have more enough time for other works.



Each Single Copper sheathed heating rod is tested before it is cast in an aluminum alloy or Mica Sheet. These heating rods are comparable to those found in industrial ovens that heat up quickly, work efficiently and last many years. With our industrial quality heat castings, you can get five years worry free warrant.